

Strontium WiFi Cloud

INSTALLATION GUIDE



System Compatibilities & Media Support:

Microsoft Window XP / Vista / 7 / 8

1. For USB 3.0 speeds, the system must support USB 3.0 specifications.
2. For USB 2.0 speeds, the system must support USB 2.0 specifications.

Mac OS 10.5 & higher

1. For USB 3.0 speeds, the system must support USB 3.0 specifications.
2. For USB 2.0 speeds, the system must support USB 2.0 specifications.

Android Phone Ver. 2.1 & higher
Android Tablet Ver. 3.0 & higher

Supported Media Playback

Video : H.264, .MP4, .3GP, MPEG-TS, .MK
Photo : .JPG, .GIF, .PNG, .BMP, .WEBP
Audio : AAC, MP3, WAV, OGA, .IMY, OGG, RTTL, RTX
Document : .pdf, .txt, .doc, .docx, .xls, .xlsx, .ppt, .pptx

Apple iPhone/iPad/iPod/ iPod Touch
iOS 4.0 & higher

Supported Media Playback

Video : H.264, .MOV, .MP4, .MPV, .3GP, .M4V
Photo : .JPG, .JPEG, .GIF, .PNG, .BMP, .TIFF, .TIF
Audio : AAC, MP3, WAV, M4A, .AIF
Document : .pdf, .txt, .doc, .docx, .xls, .xlsx, .ppt, .pptx

1. APP Download & installation



Strontium WiFi Cloud : Wi-Fi Storage APP is available on [Apple App Store](#) and [Google Play Store](#) for free download.

- A) Apple iPhone/ iPad (iOS)
Go to App Store, search Strontium Hub and install it.
You will see the Strontium WiFi Cloud icon on your home screen if installed successfully.



- B) Android Phone/ Tablet
Go to Google Play Store, search Strontium Hub and install it.
You will see the Strontium WiFi Cloud icon on your home screen if installed successfully.



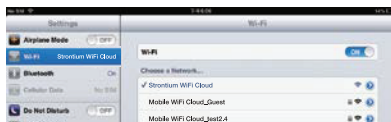
2. iPhone/iPad Connection

- A) On your iPhone/ iPad, press "Settings", then "Wi-Fi".
- B) Make sure Wi-Fi function is opened.
- C) Under "Choose a Network", select "Strontium WiFi Cloud".
- D) Full connectivity is indicated by the Wi-Fi icon in the status bar. Go back to the home screen and select the "Strontium WiFi Cloud" icon.



1

2



To change the default SSID and enable password authentication, please see the Strontium WiFi Cloud Settings section for detailed instructions.

Access to the external storage drive.

To view the folders inside iPhone/ iPad.

Refresh.

Strontium WiFi Cloud Settings.

4. Browsing files through your external storage drive with Strontium WiFi Cloud



- Delete.
- Reload.
- Create folder.
- Rename file/folder.
- Copy file.
- Move file to other folder.
- Download to My Folder.
- Add to Play List.

4

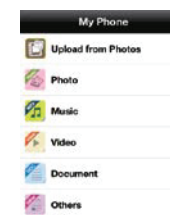
5. Browsing files sorted by Photo or Music



You can edit each file by tapping the EDIT icon or the arrow icon on the right.



6. Browsing files in Your iPhone/iPad



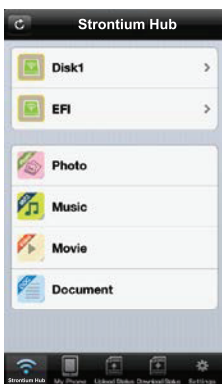
You can browse or edit file/folders like editing files in your external storage drive through Strontium WiFi Cloud by tapping My Phone.



Upload photos from your iPhone/iPad album to the external storage drive through Strontium WiFi Cloud.

5

3. The Main Function Page



- Browse through your external storage drive.
- To browse through all supported photos in the external drive.
- To browse through all supported audio files in the external drive.
- To browse through all supported video files in the external drive.
- To browse through all supported documents in the external drive.

3

7. Settings for Strontium WiFi Cloud



About Me	APP version
Status	Device's status.
System	Firmware upgrade Load Default (Reset) Reboot (Restart)
Wi-Fi Security	Security setting.
Wi-Fi Bridge	To enable internet tethering for Strontium WiFi Cloud.
Network	SSID setting; File Share_Password setting.

Security setting – WEP

- (1) Hex (Minimum character: 10) - Only letters A-F and numbers 0-9 are valid.
- (2) ASCII (Minimum characters: 5) - All letters and numbers are valid.



B) Wi-Fi Bridge



Strontium WiFi Cloud supports internet tethering so that your devices can still have internet access while connected to Strontium WiFi Cloud signal. To do so, your Strontium WiFi Cloud needs to be connected to your internet-ready Wi-Fi network.

C) Network

- (1) **SSID**
 - i) The **default SSID** is **Strontium WiFi Cloud**
 - ii) Change **default SSID**:
Settings → Network → SSID → give new SSID name → Set.
- (2) **File Sharing**
 - i) Windows file sharing (SAMBA) Setting.
 - ii) The default user name/password is **admin/admin**



8. Using Apple TV with your Strontium WiFi Cloud

For Apple TV Airplay support, please make sure your Apple TV is connected to the Strontium WiFi Cloud Wi-Fi network. During video or Audio playback, an Airplay icon will automatically appear. Simply tap and select the Airplay mode you wish to use.

9. Android Phone/Tablet Connection

A) Wi-Fi Connection

- (1) On your Android Phone/iPad, press "Settings", then "Wi-Fi".
- (2) Make sure Wi-Fi function is opened.
- (3) Under "Wi-Fi networks", select "Strontium WiFi Cloud".
- (4) Full connectivity is indicated by the Wi-Fi icon in the status bar. Go back to the home screen and select the "Strontium WiFi Cloud" icon.

A) Wi-Fi Security

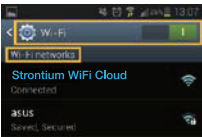
The default setting is at "Disable"; you can select the security type you want.



6

7

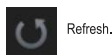
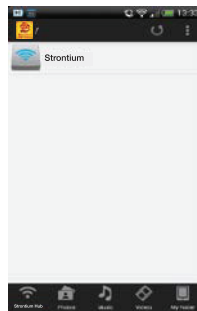
8



To change the default SSID and enable password authentication, please see the Strontium WiFi Cloud Settings section for detailed instructions.

B) The main function page

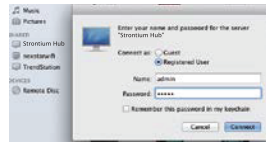
- The external storage drive.
- Tap this icon for the external storage drive.
- To browse through all supported photos in the external drive.
- To browse through all supported audio files in the external drive.
- To browse through all supported video files in the external drive.
- To view the local folder (directory) inside the Android Phone/ Pad.
- Strontium WiFi Cloud setting.



9

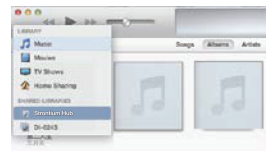
10. Mac Computer's Connection

- A) In Mac OS you can use Finder to find Strontium WiFi Cloud.
- B) The default user name/password is **admin/admin**.



11. iTunes

- A) In iTunes you can find Strontium WiFi Cloud under Shared Libraries



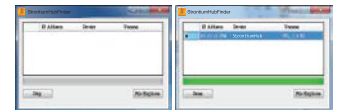
- B) Listen to any songs/albums you like from Strontium WiFi Cloud.



10

12. Windows Computer's Connection

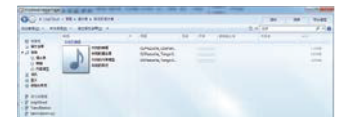
- A) The Windows Strontium Hub Finder application can be found on Strontium WiFi Cloud web page. When using PC's WiFi to connect to Strontium WiFi Cloud, under web browser type <http://10.10.10.254> Click Tools to download StrontiumHub.exe
- B) You can execute StrontiumHub.exe to find Strontium WiFi Cloud device.



- C) The default user name/password is **admin/admin**.

13. UPnP Support

- A) You can view all medias from Strontium WiFi Cloud through UPnP server.



- B) You can link to Smart TV by UPnP support.