



# **Solid State Drive Installation Guide**

## Installation Guide

This guide explains how to install a Strontium Solid State Drive (SSD) on a SATA based desktop or notebook computer.

### Before you Begin

- Have the Acronis Cloning Software CD ready.
- Have the necessary hardware for installation.

Installing an SSD consists of mainly 3 main steps

- 1) Connect the Strontium SSD to your computer.
- 2) Transfer your data from your current storage device to your new Strontium SSD.
- 3) Swap the current storage device with your new Strontium SSD.

### Connect the Strontium SSD to your Computer

Desktop Computers	Laptop Computers
<ul style="list-style-type: none"> <li>● Power off the computer and remove the case</li> <li>● Connect one end of the SATA interface cable to a SATA interface connector or SATA host adapter on your computer motherboard and connect the other end to the Strontium SSD. Connect the power also</li> <li>● Power on the computer and wait for the operating system to recognize the Strontium SSD</li> </ul>	<ul style="list-style-type: none"> <li>● Put the SSD in the enclosure and connect one end of the USB cable to the laptop and the other end to the enclosure</li> <li>● Power on the computer, if necessary, and wait for the operating system to recognize the Strontium SSD</li> </ul>

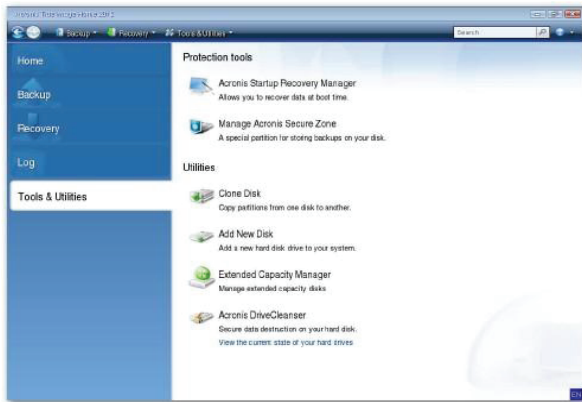
### Transfer Your Data

The process is same for desktop and laptop computers

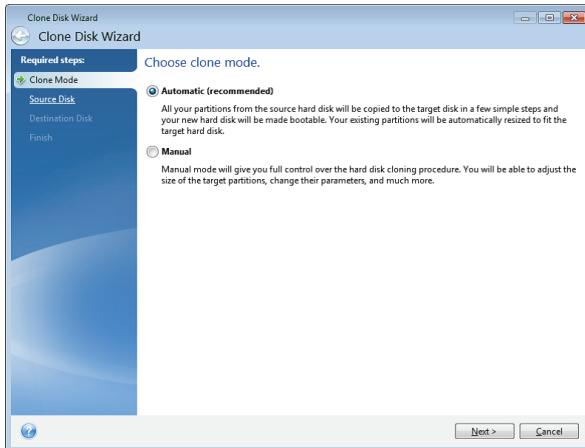
- 1) Insert the Bootable CD of Acronis True Image Home 2012.
- 2) Restart the computer and select to Boot to CD when prompted.



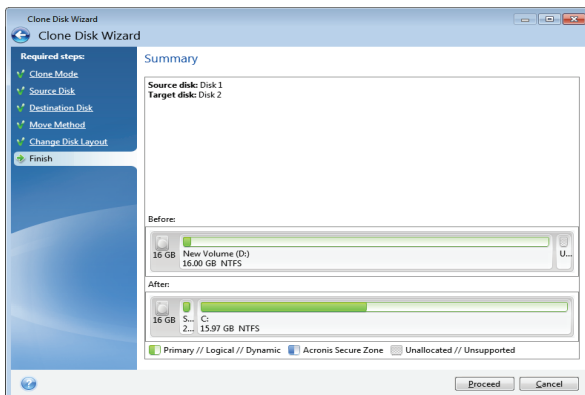
- 3) Select "Acronis True Image Home (Full version)".



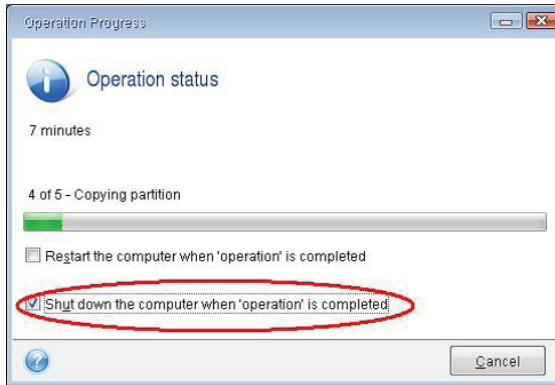
- 4) Click on “Tools & Utilities” on the left panel and click on “Clone Disk” under “Utilities” on the right panel.



- 5) Leave the default option and click [NEXT].
- 6) Select your HDD as the source hard disk and click [NEXT].
- 7) Select the Strontium SSD as the target disk and click [NEXT].



- 8) Verify that the summary shows the correct target disk and the partitions. If the size of the Strontium SSD is smaller than the old HDD, automatic resizing is done. Click [PROCEED].



- 9) To disconnect the old drive, you need to turn off the computer. To do this automatically, select the **Shut down the computer when 'operation' is completed** check box in the Operation Progress window.
- 10) On an average, it will take about 10 minutes for 30GB of used space on the old HDD.
- 11) Click [OK] when the operation completes and shutdown the computer.

## Swap Your Drives

After you have migrated your data onto the Strontium SSD, shut down your computer and swap your current storage device with the new Strontium SSD.

Desktop Computers	Laptop Computers
<ul style="list-style-type: none"> <li>● Power off the computer</li> <li>● Swap the SATA cable of the Strontium SSD and your current storage device</li> <li>● You can either remove the current storage device or keep it there as a secondary drive and change the boot order in BIOS so that the computer boots from the Strontium SSD</li> <li>● After swapping the drives, power on the computer</li> </ul>	<ul style="list-style-type: none"> <li>● Power off the computer and remove battery and remove the back cover</li> <li>● Remove the current storage device from the laptop's drive bay</li> <li>● Swap the drive with the new Strontium SSD</li> <li>● Replace the cover and power on the computer</li> </ul>

Now enjoy your new high-performing Strontium Solid State Drive!